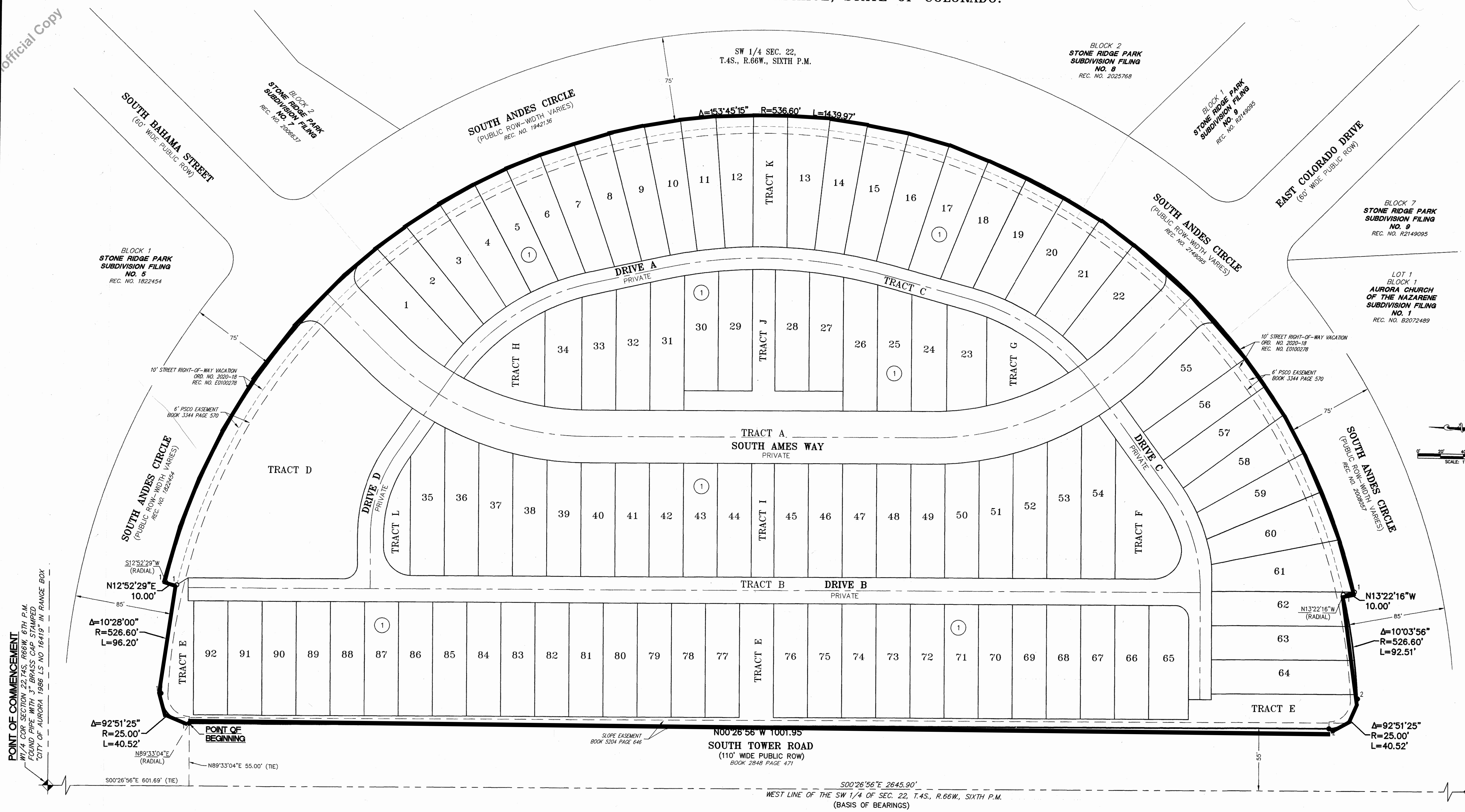


EAST BEND SUBDIVISION FILING NO. 1

SITUATED IN THE SOUTHWEST QUARTER OF SECTION 22, TOWNSHIP 4 SOUTH, RANGE 66 WEST OF THE SIXTH PRINCIPAL MERIDIAN, CITY OF AURORA, COUNTY OF ARAPAHOE, STATE OF COLORADO.

Unofficial Copy



POINT OF COMMENCEMENT
SW COR SECTION 22, T4S, R66W, 6TH P.M.
FOUND PIPE WITH 3" BRASS CAP, STAMPED
CITY OF AURORA 1986 LS NO 16419 - IN RANGE BOX

POINT OF BEGINNING
SW COR SECTION 22, T4S, R66W, 6TH P.M.
FOUND PIPE WITH 3" BRASS CAP, STAMPED
CITY OF AURORA 1986 LS NO 16419 - IN RANGE BOX

MONUMENT SYMBOL LEGEND

- ◆ SECTION CORNER MONUMENT AS DESCRIBED
- ① SET NO. 5 REBAR WITH 1-1/4" YELLOW PLASTIC CAP STAMPED "AZTEC LS 37933"
- FOUND NO. 5 REBAR - NO CAP
- ② FOUND NO. 5 REBAR WITH 1-1/4" YELLOW PLASTIC CAP STAMPED "LINN INC PLS 14112"
- ## = INDICATES BLOCK NUMBER

District Boundary



FOR AND ON BEHALF OF
AZTEC CONSULTANTS, INC

AZTEC
CONSULTANTS, INC.

300 East Mineral Ave., Suite 1
Littleton, Colorado 80122
Phone: (303) 713-1898
Fax: (303) 713-1897
www.aztecconsultants.com

AzTec Proj. No.: 21419-45 Drawn By: JFT

DEVELOPER
RICHMOND AMERICAN HOMES

4350 SOUTH MONACO STREET
DENVER, CO 80237
(303) 773-1100

DATE OF PREPARATION:	02-28-2020
SCALE:	1"=40'
SHEET 2 OF 7	